

# Intelligent Spend Management

Empowering Finance Leaders with Unified Visibility, Control, and Compliance

**Managing spend has never been more complex – or critical.**

Finance, procurement, and supply chain leaders are struggling to manage enterprise spend because:

- More buying decisions are getting pushed out to more employees
- Regulatory requirements keep changing
- Different systems are used to manage different categories of spend – direct and indirect, services, external workforce, travel, and expenses



According to a recent IDC study, 53% of companies use individual applications to manage different types of spending . . .

. . . but 66% say it's an important priority to achieve a single view of spend.<sup>1</sup>

**Poorly controlled spend puts key finance priorities at risk.**

Without centralized, real-time spend data and best-in-class controls, finance leaders often struggle to:

- Redirect spend as priorities change and new opportunities emerge
- Reduce excessive expedited logistics and high inventory carrying costs from excess buffer stock
- Drill down on expense categories and audit invoices
- Address excessive employee travel



50% of CEOs and finance and IT leaders see vast room for improvement in spend management.<sup>2</sup>

**Enabling a unified view of spend requires finance to collaborate with IT, the supply chain, and procurement.**

According to IDC,<sup>3</sup> 90% of business leaders say there's room to improve how they control spend by:



Improving the accuracy and completeness of metrics (39%)



Managing the complexity of regulatory and compliance policies for spending (36%)



Improving decision-making around individual spending (35%)



Being able to implement changes in spending priorities (34%) and stop poor spending decisions before they occur (33%)

**Intelligent spend management gives finance visibility, agility, and control across every source and category of spend.**

Bridge the gaps between categories of spending by delivering intelligent spend management (ISM) – an approach that uses intelligent technologies and solutions to:

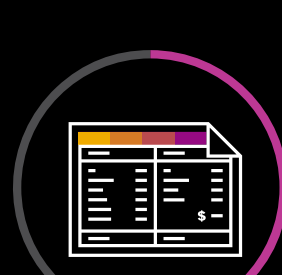
- Break down barriers between finance, procurement, and the supply chain for a unified view of spending
- Bring all spend together in a safe, secure infrastructure
- Give finance, procurement, and supply chain leaders visibility and control of each spend category and tools to orchestrate spend across categories



83% of companies using cloud technologies were satisfied or extremely satisfied with their overall approach to controlling and managing spend.<sup>4</sup>

**ISM is the future of spend management.**

ISM is the key to unified spend visibility, best-in-class control of every category, and enterprise-wide compliance. IDC reports<sup>5</sup> that companies look to ISM solutions for features that:



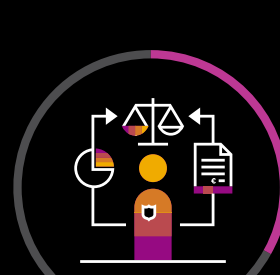
Improve planning, budgeting, and cost management (38.1%)



Manage indirect spending and supply chain requirements (35.0%)



Optimize working capital (35.0%)



Provide a single view of spend across the enterprise (33.3%)



94% of decision-makers say they need – and find value in – an intelligent spend management platform.<sup>6</sup>

**Want to learn more?**

Every source. Every category. One unified view. To learn more about how intelligent spend management helps you transform business, [read the IDC white paper](#) “The Future of Spend Management: Approaches, Opportunities, and Challenges in a Digital World.”

1.–6. “The Future of Spend Management: Approaches, Opportunities, and Challenges in a Digital World,” IDC white paper sponsored by SAP, November 2019.